

**Field Trip
I-435 & Holliday Drive
and**

**if time permits
US169 and 151st Street**

Ken Stalder

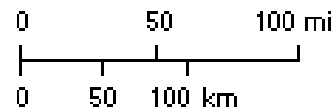
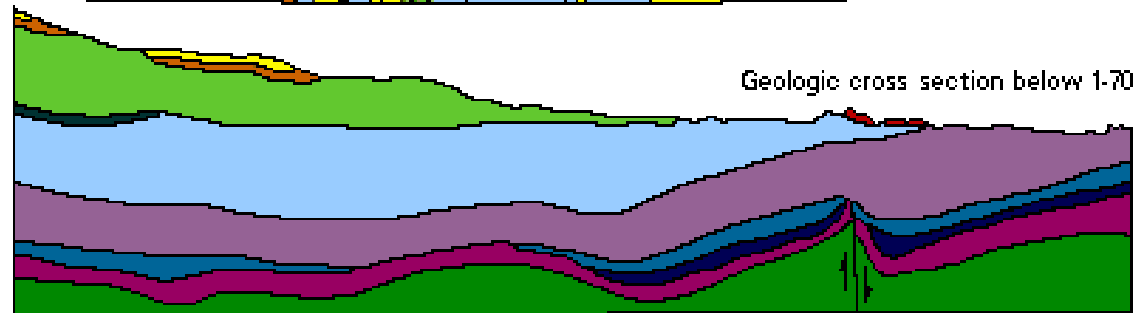
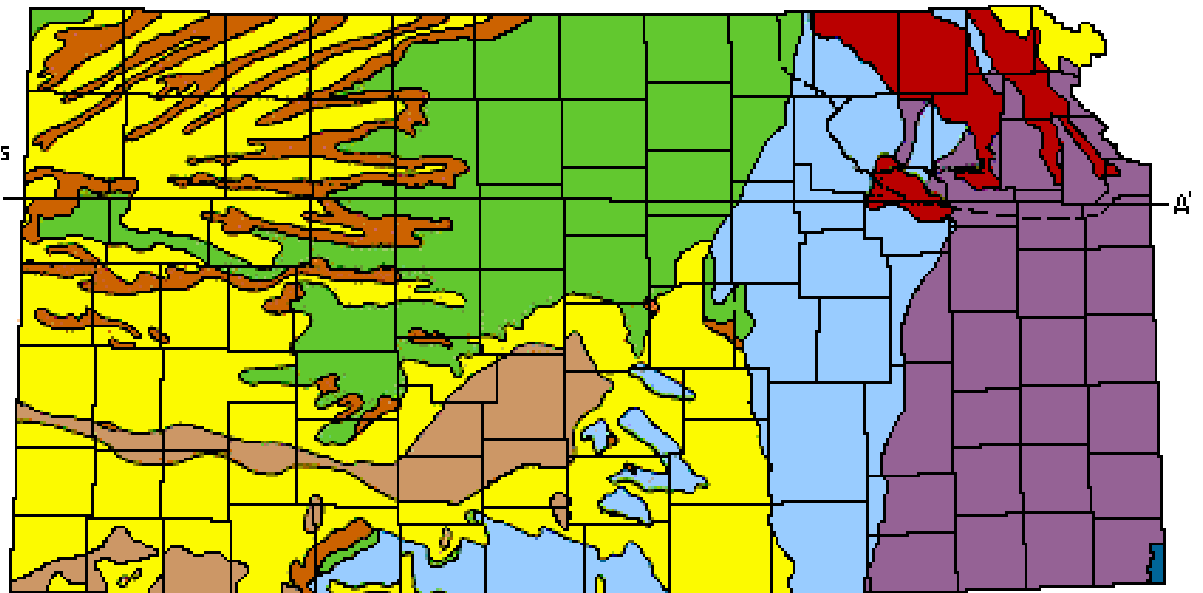
Modified Code of Ethics

- Obtain permission from the land owner prior to collecting. If its along a highway, park only where its safe.
- Be informed on all laws or rules governing collecting on public lands and will observe them.
- Do not be a “commercial collector”
- Don’t damage anyones property, don’t throw rocks at cars, etc. Fill all excavation holes which may be dangerous to livestock.

Kansas

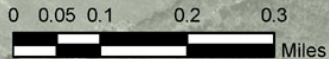
Generalized Geologic Map of Kansas

- Quarternary
 -  Loess and river-valley deposits
 -  Sand dunes
 -  Glacial-drift deposits
-  Tertiary
-  Cretaceous
-  Jurassic
-  Permian
-  Pennsylvanian
-  Mississippian
-  Silurian-Devonian
-  Cambrian-Ordovician
-  Precambrian
-  Limit of Kansas Glacier (Qt)
- A — A' Line of cross section



N

Holiday Drive



1

I-435
Exit 8a

approx 30
miles from
Maple Woods
CC



I-435

Renner Road

Johnson County,
Kansas

Johnson Drive

- Quaternary
- Stanton Fm
- Vilas Sh - Plattsburg Fm
- Lane Sh - Wyandotte Fm
- Liberty Memorial Shale
- Iola - Chanute

Holliday Drive Outcrop

**Liberty
Memorial
Shale**

**(small
fossils)**

**Raytown LS
Mbr**

(brachiopods)

**Muncie Creek
Shale**

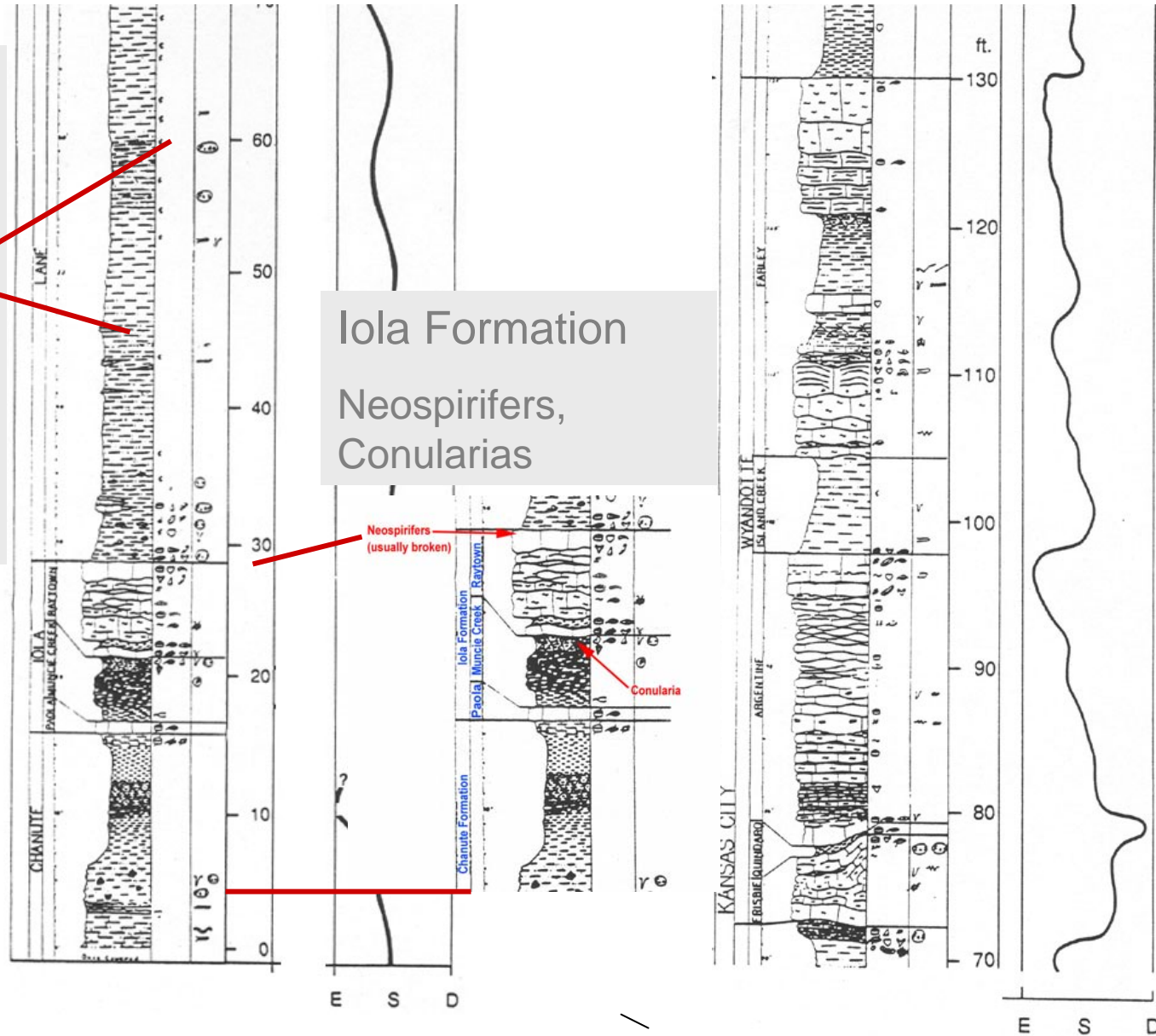
(Conularia)



Stratigraphic Column

Liberty Memorial Formation (formerly the Lane Shale)

Approx. location of concentration of fossils (Crinoid calyx, Corals, Brachiopods, Gastropods, Echinoids plates, Others)



Iola Formation
Neospirifers,
Conularias

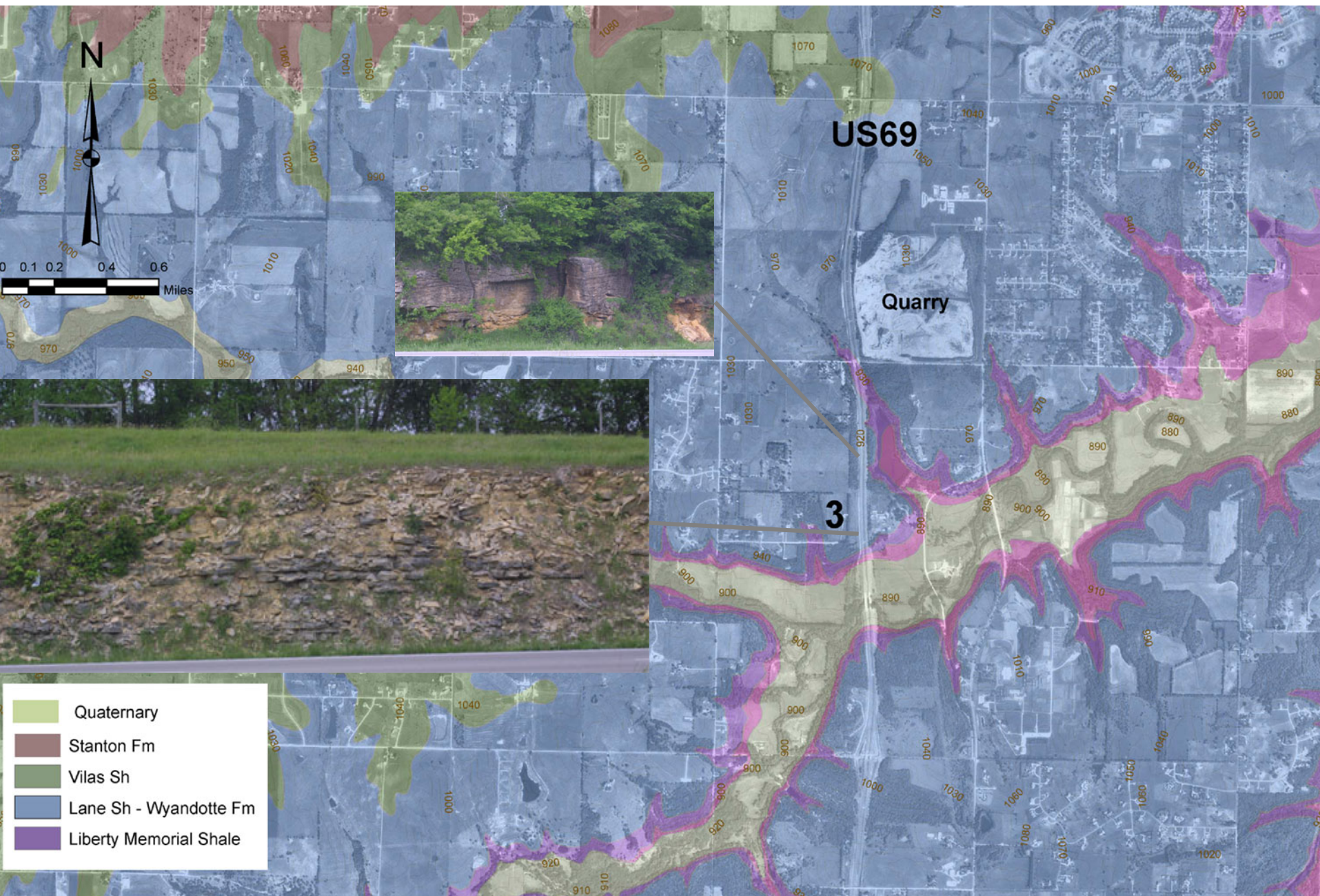


Bioherm - a carbonate rock formation, in the form of an ancient reef or hummock, consisting of the fossilized remains of corals, algae, mollusks, and other sedentary marine life, and commonly surrounded by rock of a different lithology.

Deffenbaugh Quarry-Dump

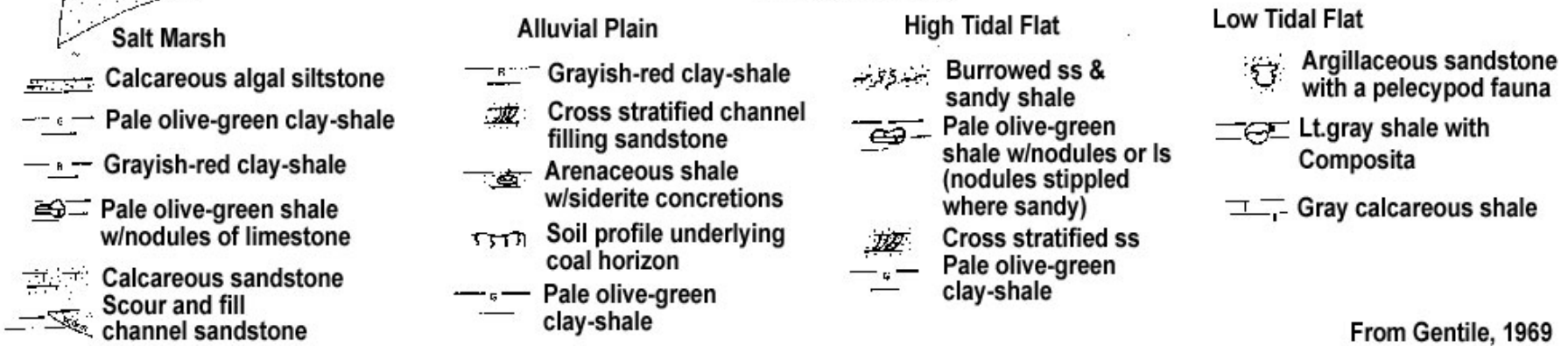
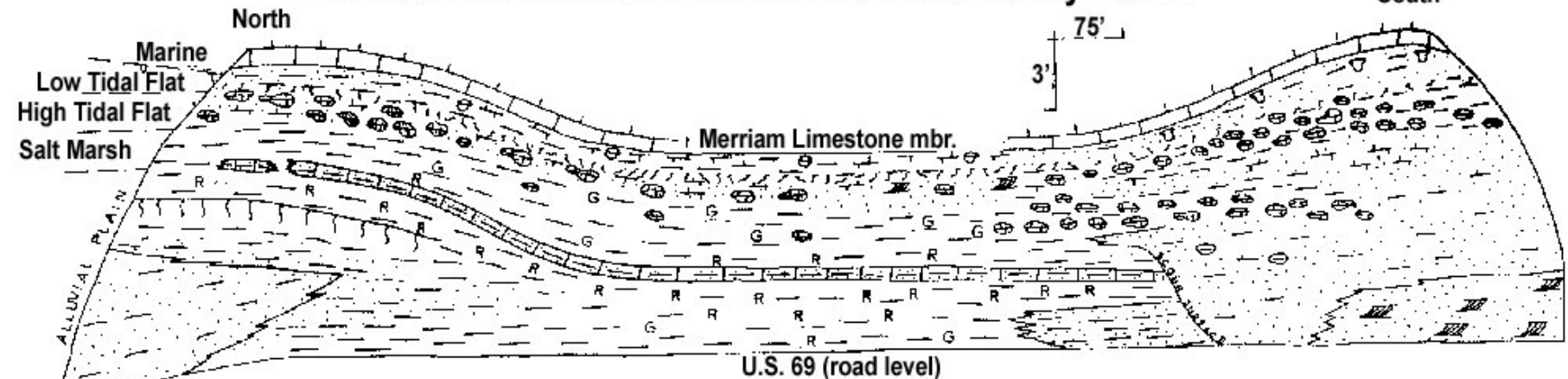


Southbound US69 (South of Stanley – 151st Street – If Time



Overland Park Cross Section

Paleoenvironments and Associated Sedimentary Facies



From Gentile, 1969